

2014 Tourism Guide

Elias Motsoaledi Local Municipality





Telephone Numbers
013-262 3056

Fax Numbers
013-262 2547

Physical Address
2 Grobler Avenue
Groblersdal
0470

Postal Address
P.O. Box 48
Groblersdal
0470

Elias Motsoaledi Local Municipality Map



Where to stay

Sedupe Sa Kopa Guest House

Sedupe Sa Kopa Guest House is situated approximately 13-15 km outside Groblersdal, with a full licensed bar and Conference facilities.

We are continually expanding our facilities. We currently have 42 spacious rooms available, all equipped with TV & DSTV. Our Fully equipped Restaurant provides something for every taste.

Whether it's for business or pleasure you'll find a comfortable resting place in our tranquil surroundings which creates a lovely tribal ambience that makes one feel right in the bush.

Please enquire at reception to establish what activities are currently available and or what can be arranged for you.

Contact Details

Office: 079 924 7369
Cell: 079 106 9695
Fax: 086 519 9802
Email: sedupesakopa@ctecg.co.za

Location:

From Tafelkop, next to the Engen filling Station. About 20km from Groblersdal & 10km from Motetema.

Manager: David Kgubudi Rakgetse



Guesthouse 52

Welcome to Guesthouse52, located close to the Groblersdal CBD area.

Ten rooms are available and accommodate up to 17 persons. All our en suite rooms are comfortably equipped with DSTV television, air-conditioning and coffee and tea facilities. Secure, uncovered parking is available on the premises.

Guests are provided with their own remote control to freely access the Guesthouse as required. Fax and Internet facilities are available on the premises at reception.

Recreational activities that can be enjoyed while you are staying in Groblersdal include horse riding on a game farm, game viewing, 4x4 and quad bike driving courses as well as fishing!

Contact Details

Tel: 013 262 3136
Cell: 083 609 5939
Email: gert@guesthouse52.co.za
www.guesthouse52.co.za

Location:

Situated on 52 Haarhoff Street, Groblersdal, Limpopo, South Africa

Coordinates to the lodge:
S.25 10.257' E.29 23.310'



Where to stay

Lion's Guesthouse

Whether it's for business or pleasure you'll all find a little bit of home at Lion's Guesthouse. Enjoy our air-conditioned rooms, massive green tropical garden, sports bar and swimming pool. Lion's Guesthouse is owned by a Belgian/South African couple, Els and Cornel Botha Standaert.

Lion's Guesthouse is situated in Groblersdal, the centre of the Cultural Heartland, Sekhukhune District with many natural and cultural attractions e.g. Loskop Dam nature reserve and Esther Mahlangu's Art School.

Lion's Guesthouse is easily reachable from all Groblersdal schools and only a few 100 meters away from Groblersdal CBD.

Contact Details

Tel: 013 262 2268
Cell: 071 178 1056 (emergency)
E-mail: info@lionsguesthouse.co.za or
info@lionstours.co.za
www.lionsguesthouse.co.za

Location:
25, Haarhoff Street, Groblersdal 0470,
South Africa



Loskop Valley Lodge

Welcome to Loskop Valley Lodge and Restaurant situated in the Loskop Valley, with a three star accolade from the Tourism Board. We provide accommodation in comfortable rooms amid subtropical gardens and palm trees and meals can be enjoyed at our a la carte Restaurant with a special Sunday afternoon buffet. We also facilitate conferences, functions and weddings.

It is the largest Lodge of its kind in the immediate vicinity of Groblersdal. Though it can accommodate large groups, the lodge was designed in such a way that there is still a prevailing feeling of privacy.

Come and visit us - be it as business person or traveler - Loskop Valley Lodge is the perfect home away from home.

Contact Details

Landline:
+27 (0) 13 262 3760
+27 (0) 87 750 3839
+27 (0) 87 750 3840
Facsimile: +27 (0) 86 612 8046
Cell: +27 (0) 78 264 7763 (Sarah)
E-Mail: loskop.v-lodge@loskop.co.za

Location:
Loskop Valley Lodge is situated 4,4 km
from Groblersdal on the Bronkhorstspuit
- road and is about 100 km from
Bronkhorstspuit, 40 km from Loskop dam,
90 km from Middelburg and 28 km from
Marble Hall.



Where to stay

El Palmar Guesthouse

El Palmar Guesthouse is an elegant guesthouse - home of the tourist and the businessman alike. All our rooms are en-suite and have DSTV and air-conditioning. You can relax next to the sparkling swimming pool, enjoy bird watching or just unload while walking through the gardens.

Set menus are served, but we also cater for individual preference and special diets on request. Braai and lunch packs are available on prior arrangement. We also cater for special occasions and functions as well conferences.

Contact Details

F: +27 86 625 3304
C: +27 83 661 8502
E: elpalmar@telkomsa.net

Co-ordinates:
25°10'29.28"S 29°23'27.24"E

39 Haarhoff Street,
Groblersdal, 0470
South Africa



Leselo La Bontshi

Leselo La Bontshi ('The Place of Plenty') Lodge offers a place of tranquility to rest and rehabilitate oneself from the stress of every day life. This unique setting of the Lodges are on the banks of the Olifants River, only 2 hours drive from Johannesburg and Pretoria.

Leselo La Bontshi offers self-catering accommodation in fully furnished luxury lodges with en-suite bathrooms, outside showers and fully fitted kitchens. Decks, with built in braais, overlooking the magnificent Olifants river. Along with four fully furnished bush lodges, boma and swimming pools.

Contact Details

T: +27 82 799 1377
F: +27 86 218 9245
E: bookings@leselo.com

GPS Co ordinates

S 25° 13' 32"
E 29° 27' 40.5"



Where to stay

Ruby River Resort

We offer accommodation in the form of Comfortable Self-Catering Chalets, Caravan Park, Self-Catering Safari Tents and Catering Chalets.

Our facilities include Deckchairs around the sparkling infinity pool which blends with the river, Boma fire places, Big screen DSTV with the occasional live entertainment, Conference Facilities and a Chapel.

We provide catering for Conferences, Functions and Weddings. The Bike and Barrel River Deck Bar and Restaurant is fully licensed with à la carte menu.

Activities include Putt-Putt and Pool Table, Canoe Rides, Hiking and Quad Trails, Paint Ball, River bank terrace game, and River Fishing and Birding

Contact Details

Tel: 013 262 4941
Fax: 086 675 8554
Cel: 083 673 3067

rubyriverresort@telkomsa.net

Location:

Ruby River Resort is situated on the banks of the Olifants River in the Loskop Valley near Loskop Dam. It is approximately 2 hours' drive from Pretoria and Johannesburg, between Groblersdal (22 km) and Middelburg (65 km) in the Limpopo Province.



Wolf's Rock Lodge

The lodge consists of 11 ensuite rooms, TV & kettle. There is a restaurant, conference facilities for 30-100 people, a swimming pool, a bar and entertainment area.

It consists also of a Bush Camp that sleeps 20 people (self service and own linen).

A Chapel and River Side reception area completes this bushveld jewel. The Lodge is 3km from town and Loskop Aventura is 30km away.

Contact Details

Contact Person: Jaco

Tel no: 013 262 5083
Mobile no: 082 559 5083
Email: jako@wolfsrock.co.za
Fax no: 013 262 3846

Location:

Herreford Road
Klipbank Farm
Groblersdal
South Africa



Where to stay

Thabankwe

The Lodge consists of four rooms with en-suite, two doubles and two twin. Main Lodge area has a fully licenced bar with a poole table, comfortable seating and large dining area.

A charming sitting room with a cosy fireplace perfect for those cold winter evenings rounds off the lodge area. The rustic Boma provides the perfect place to wind down after a long day in the veld.

A swimming pool situated in lush beautiful gardens, as well as a jacuzzi and lovely nature walks are some of the attractions of this enticing setting.

For those seeking the self-catering option we offer 4 cabins, each consisting of two separate rooms with a combination of doubles and singles. Each room is equipped with a private bathroom.

Contact Details

+27 82 829 7701 - Willie
+27 82 829 7702 - Gerda

Email: willieroux@lantic.net

Location:

Plaas Doringpoort, Route 33
30km outside Groblersdal on
Stoffberg Road,
Lompopo, South Africa



Villa Contessa Guesthouse

At Villa Contessa Guesthouse we aspire to equal the hospitality and rich culinary culture of Zakynthos. All rooms are en suite with showers. Air-conditioning, DSTV with individual decoders for personal selection and tea & coffee. Facilities include BBQ area and a swimming pool for guest to enjoy.

We are situated in Groblersdal within 2 km from the Groblersdal CBD and within 5 km from the Primary and Secondary schools. We make provision for business travellers, families and children, of all ages, are welcome. All rooms are comfortably furnished with private access and secure parking.

Breakfast is served from 07:00 until 09:00 and dinner is served on prior arrangement. We provide for special dietary requirements with regard to cholesterol, diabetes, vegetarian, etc. The area has typical Bushveld vegetation with hot summers and mild winters.

Contact Details

Telephone: +27 13 262 2085
Facsimile +27 13 262 2085
Mobile: +27 82 781 0620
E-Mail: villacontessa@telkomsa.net

Address: 33 Hans Abraham Street

GPS Coordinates

S 25 10' 10.2"
O 29 22' 54.8"



Where to stay

Guinea Feather Country Lodge

Guinea Feather Country Lodge & Restaurant offers the weary traveler the opportunity to relax in the serenity of a Bushveld farm.

Whether staying overnight in one of our Suites, dining in our intimate Restaurant, enjoying a drink on our 'Froggs & Feathers Pub & Lapa Deck', Guinea Feather is country elegance par excellence!!

Guinea Feather is located between Bronkhorstspuit and Groblersdal in the heart of the Bushveld. Come and relax in the peaceful atmosphere of a stylish country restaurant. Be smitten by the nostalgic and romantic atmosphere of Guinea Feather - where our guests become our friends.



Contact Details

+27 82 330 1916 - Ester
+27 82 626 6736 - Willem
+27 72 173 2721 - Office
+27 86 603 3019 - Fax

Email: gfeather@ctecg.co.za
Skype: guineafeather

GPS Coordinates
S 25° 13' 099
E 29° 15' 518



Blue Skies Guest House

Blue Skies Guest House is ideally situated, within walking distance of the CBD-area of Groblersdal.

Our rooms are very spacious - each with it's own entrance directly from the carport next to each room. Almost every room has a view of our beautiful, peaceful garden occupied by a large variety of bird species. Guests are welcome to sit at any of the tables provided outside while enjoying a drink from our bar.

A games room, furnished with a pool table and dart board, is located on site. A crystal clear swimming pool is available to our guests for those hot sunny days which the Loskop Valley is renowned for. An adjacent lapa and braai area is at our guests disposal.

There is no place like home, but, at Blue Skies Accommodation you are not far from it!

Contact Details

Tel: 013 262 5452
Fax: 086 541 0149
Cel: 071 428 4549

E-Mail:
blueskiesaccommodation@gmail.com

Address:
27 Grobler Avenue
Groblersdal



Where to stay

Riverside Lodge

Our accommodation has recently been upgraded and new self catering units are available. All units have braai areas, open air evenings next to the fire is extremely popular.

Our restaurant is spacious and our a la carte menu caters to everybody's tastes. We also provide custom made menus for groups and can even provide you with salads, pap & sauce with your braai meat. The fully stocked bar gives you the opportunity to enjoy sundowners whilst overlooking the river and also has big screen TV's for those rugby games that can't be missed.

Fishing is the most popular activity at Riverside Lodge, the Olifants River has a wide range of fish and although they actually get caught it's all about the chase.

We also give guests the opportunity to occupy the Lodge exclusively for weddings, conferences and functions. Our quotes are done according to your needs and attention is given to detail when planning your special event.



Contact Details

T: 013 262 4405
C: 083 235 3154
F: 086 563 4431
E: besprekings@riverslodge.co.za

B19 Kameeldoorn, Loskop Suid,
Groblersdal

GPS Coordinates
S 25 19 45.8 E 29 23 52.7



GODIVA Boutique accomodation & Spa

Spa

Godiva Spa and Wellness Centre is a welcoming escape for travellers and people who appreciate beauty and want to get away from the hustle and bustle of the outside world.

Accommodation

All our rooms have it's own balcony and leads to the lush garden. Rooms are spacious with attention to every little detail. It is non-smoking rooms with refreshment stations, mini bars, hairdryers, wireless internet, plasma satellite television with selected channels, air-conditioning, safe, ipod mp3 player and radio, robes and slippers to make your stay warm and enjoyable. You will love the interior decorating of all.

Cuisine & Functions

CuisineGodiva specialize in special functions. Whether it is only a group of friends who want to meet and eat in a tranquil ambience or a birthday celebration, anniversary or small wedding- we are ready to spoil you to the teeth! We are able to host guests from only 2 up to 45 people.

Contact Details

Telephone
Spa
+27 82 349 8164 - Mariana Smit
Accommodation
+27 79 439 4966 - Aleke Erasmus
Functions
+27 79 439 4966 - Aleke Erasmus

GPS: 25°10'1"S, 29°23'0"E

Physical Address
c/o Bosbok & Duiker Streets
Groblersdal, 0470



Where to stay

Kingdoms Lodge

Kingdoms Lodge is located between Groblersdal and Marble Hall on the N11.

The Lodge offers you luxury and spacious accommodation in self-catering units or rooms. We also have a licensed a la Cart restaurant on the premises. The restaurant is overlooking a magnificent koi dam with Zebra, Impala and Warthogs roaming.

We also make provision for conferences and cater for a variety of functions including weddings.

Contact:
E: kingdomlodge@ctecg.co.za
Tel: 083 235 7449
Fax: 086 685 2749
Email: Kingdoms Lodge
Directions and Road Map

GPS Coordinates:
S 25 06' 39.0"
E 29 23' 32.4"

Directions:
From Groblersdal on the N11:
7 km, entrance on the right
From Marble Hall on the N11:
21.6 km, entrance on the left



Kamoka Lodge

Kamoka Lodge offers luxury accommodation, with a fully equipped kitchen for your convenience. Bed & breakfast accommodation, with full English breakfast, is on offer to guests, with a fully licensed restaurant and bar. A la carte meals for lunch and dinner are served in the restaurant.

The lodge has 210 hectares of natural habitat with indigenous fauna roaming on the lodge grounds. This region is also rich in indigenous bird life, indeed a Bird Watcher's paradise. One of our main attractions is our crocodile dam as well as our black bass dams. Guests can enjoy long walks, with a swim in the many mountain streams along the way.

We are approximately 2 hours drive from the Kruger National Park and 1 hour from all the Mpumalanga attractions such as Sabie, Pilgrims Rest, God's Window, Lisbon Falls, Dullstroom, Bourke's Luck Potholes and more.

Your hosts: Steve and Edith Kurensky
Tel: +27 (0)13 273 7117
Fax: 086 621 5311
Cell: +27 (0)83 206 4824
email: reservations@kamokallodge.co.za

GPS Coordinates: S25 12.992 E 29 58.122



Where to stay

Ya Rena Guesthouse

Ya Rena Guest House are situated in Groblersdal, in the heartland of the Sekhukhune District. Groblersdal is approximately 20 minutes' drive north of the massive Loskop Dam. The area offers visitors the exciting opportunity of game viewing by boat in the Loskop Dam Nature Reserve. This area is alive with bird and wildlife.

We offer a tranquil, luxurious resting place, where you will feel at home, whether you are on business or on holiday. Located near the local schools, Ben Viljoen, Jullian Muller and CVO Gromar and bordering the Groblersdal CBD area, access to the town's facilities are only minutes away.

Contact details

Contact Details
Tel: +27 (0)13 262 3537
Tel: +27 (0)87 150 8239
Fax: +27 (0)86 299 3780
Email: info@yarenaguesthouse.co.za

Directions
7A Tantes Avenue, Groblersdal

GPS Coordinates:
S 25° 10,210 E 29° 23,716



The Lookout Lodge

The lookout lodge has a wide variety of activities such as game drives, bushwalk and archery. We are the perfect leisure getaway for you.

Only two hours' drive from Johannesburg will take you into the midst of the peaceful African bush, just outside Groblersdal, a malaria-free area in the Limpopo Province. The Lookout Lodge is ideal for a leisure getaway, conferences and weddings. The lodge is surrounded by the beauty of unspoilt Africa where guests can experience the serenity of the bush throughout their stay. With 16 spacious chalets, indoor and outdoor dining venues, a sunny pool area, numerous activities and attentive caring services, The Lookout strives to make your experience so memorable you will be longing to visit again and again!

The Lookout Lodge is surrounded by the splendour of nature, overlooking hillsides and the peaceful African bush. Our friendly, experienced staff will make guests feel at home from the moment they arrive.

Tel: +27 13 590 1130

Lodge Cell: +27 79 440 5786

Fax: +27 13 262 3970 / 086 718 6721

Email:
enquiries@lookoutlodge.co.za

reservations@lookoutlodge.co.za



Where to stay

Epephia Guest House

Epephia Guesthouse is situated passed the Leeufontein turn-off in the Matetema Village area and is a definite favorite among local and international people.

Accommodation includes 8 luxurious rooms with air-conditioning, bar fridge, Flat Screen TV & DSTV. We have a menu with well-prepared dishes according to every taste available for guests to choose from. The atmosphere is great and the food is great and the food is good quality.

We are client-friendly guest house, and our staff will ensure that you feel welcome and enjoy your stay from the you arrive untill the you leave.



Contact:
Tel: 013 269 0573
Emergency: 082 635 2449
Email: info@epephiaguesthouse.co.za

Chain store Restaurants



Chain store Restaurants



Local Restaurants

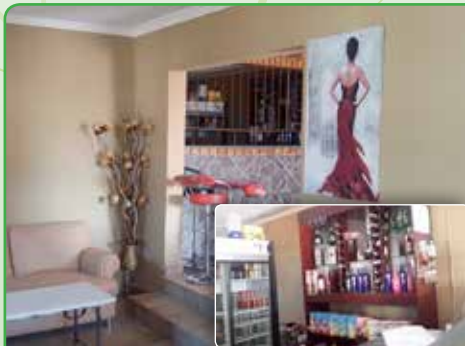


Bana Ba Mahlako /Ga Kalane
Pub and Jazz Club

Contact Details

Thabo Sethosa

Cell: 072891 3115 or
078 334 3039



K.M.S. Lounge

Contact Details

Dumisani Skhosana

Cell: 071 169 6515



Urban Touch
Passion Food and Entertainment

Contact Details

Portia Kgaladi

Tel: 012 665 4062

Cell: 083 737 2376

Email: info@urbantouch.co.za or
infratronez@gmail.com